



316 SS Handrail Welded Tee Connections



Anodized Aluminum Handrail with Non-welded Tee Connections

### GENERAL

Hollaender® handrail is available in either stainless steel (304 or 316) or anodized aluminum. Aluminum is ONLY available as a non-welded mechanical tee connection system. Stainless steel is available as either a non-welded mechanical tee connection system or a welded system. No. 4 polish is standard with other polishes available.

### OVERALL DIMENSIONS:

Height of top rail above walking surface: 36 - 38".

Post spacing: Determined by site conditions.

Mounting: Determined by site conditions.



### MATERIALS:

#### Stainless Steel

**Posts:** 304 or 316 SS, 1 ½" IPS (48.2 mm O.D.) .120" Wall.

**Rails:** 304 or 316 SS, 1 ½" IPS (48.2 mm O.D.) .080" Wall.

**Fittings:** Mechanical (non-welded) tees, 655-8 Stainless Steel.

**Base Flanges:** Stainless steel.

**Fasteners:** Stainless steel 304 alloy.

#### Aluminum

**Posts:** Aluminum 6005-T5, 1 ½" IPS (48.2 mm O.D.) Schedule 80 Wall (clear anodized).

**Rails:** Aluminum 6063-T6, 1 ½" IPS (48.2 mm O.D.) Schedule 40 Wall (clear anodized).

**Fittings:** Aluminum 6063-T6 (clear anodized).

**Base Flanges:** Cast aluminum.

**Fasteners:** Stainless steel 304 alloy.

**CODE COMPLIANCE:**

U.S. International Building Code 2009/2012/2015/New York City standards specific to handrails.

**PERFORMANCE REQUIREMENTS:**

All railings shall be supplied to conform to applicable sections of the following codes:

- International Building Code
- Canadian Building Code
- ADAAG

**STRUCTURAL PERFORMANCE:**

Provide railings capable of withstanding the effects of gravity and the following loads and stresses within limits and under conditions indicated:

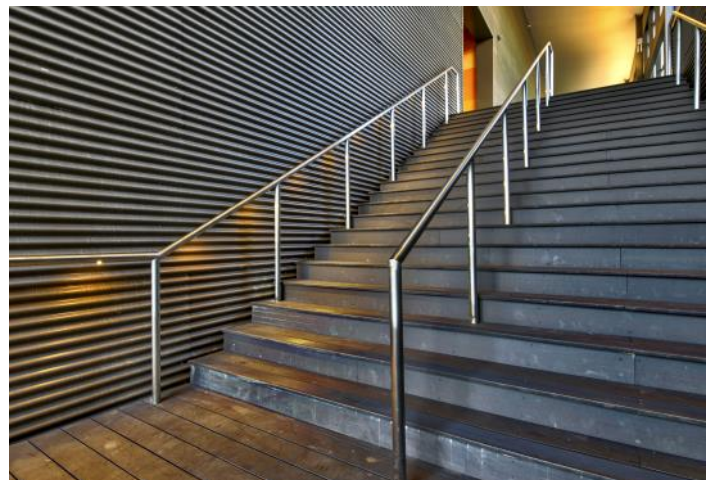
Handrails:

- \* Uniform load of 50 lb/ft. applied in any direction.
- \* Concentrated load of 200 lb/lf. applied in any direction.
- \* Uniform and concentrated loads need not be assumed to act concurrently.



Options:

- \* Illuminated Railing can be provided using LED Pods, typically installed on the underside of the top rail at 2 ft. c-c.



The Hollaender® Manufacturing Company

P.O. Box 156399 | 10285 Wayne Avenue | Cincinnati, OH 45215-6399

800-772-8800 | 513-772-8800 | Fax: 513-772-8806 | sales@hollaender.com | www.hollarch.com

